



Sp3 (Acetyl Lys551) rabbit pAb

Catalog No	YP-Ab-04431
Isotype	IgG
Reactivity	Human;Mouse
Applications	WB;IHC
Gene Name	SP3
Protein Name	Sp3 (Acetyl Lys551)
Immunogen	Synthesized peptide derived from human Sp3 (Acetyl Lys551)
Specificity	This antibody detects endogenous levels of Human,Mouse Sp3 (Acetyl Lys551)
Formulation	Liquid in PBS containing 50% glycerol, 0.5% BSA and 0.02% sodium azide.
Source	Polyclonal, Rabbit,IgG
Purification	The antibody was affinity-purified from rabbit serum by affinity-chromatography using specific immunogen.
Dilution	WB 1:500-2000;IHC-p 1:50-300
Concentration	1 mg/ml
Purity	≥90%
Storage Stability	-20°C/1 year
Synonyms	Transcription factor Sp3 (SPR-2)
Observed Band	85kD
Cell Pathway	Nucleus. Nucleus, PML body. Localizes to the nuclear periphery and in nuclear dots when sumoylated. Some localization in PML nuclear bodies.
Tissue Specificity	Ubiquitously expressed.
Function	function:Transcriptional factor that can act as an activator or repressor, probably in a isoform-specific manner. Binds to GT and GC boxes promoters elements.,similarity:Belongs to the Sp1 C2H2-type zinc-finger protein family.,similarity:Contains 3 C2H2-type zinc fingers.,tissue specificity:Ubiquitously expressed.,
Background	This gene belongs to a family of Sp1 related genes that encode transcription factors that regulate transcription by binding to consensus GC- and GT-box regulatory elements in target genes. This protein contains a zinc finger DNA-binding domain and several transactivation domains, and has been reported to function as a bifunctional transcription factor that either stimulates or represses the transcription of numerous genes. Transcript variants encoding different isoforms have been described for this gene, and one has been reported to initiate translation from a non-AUG (AUA) start codon. Additional isoforms, resulting from the use of alternate downstream translation initiation sites, have also been noted. A related pseudogene has been identified on chromosome 13. [provided by



RefSeq, Feb 2010],

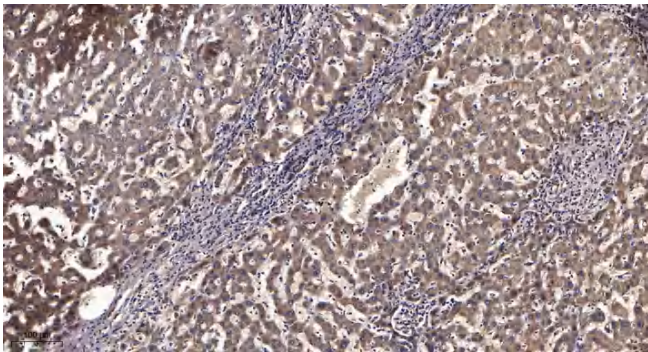
matters needing attention

Avoid repeated freezing and thawing!

Usage suggestions

This product can be used in immunological reaction related experiments. For more information, please consult technical personnel.

Products Images



Immunohistochemical analysis of paraffin-embedded human liver cancer. 1, Antibody was diluted at 1:200(4° overnight). 2, Tris-EDTA,pH9.0 was used for antigen retrieval. 3,Secondary antibody was diluted at 1:200(room temperature, 45min).